

# LED CONTRAX



Economical, bright and practical LED undercabinet with curved acrylic lens design and tool-free access to wiring compartment.

## Performance

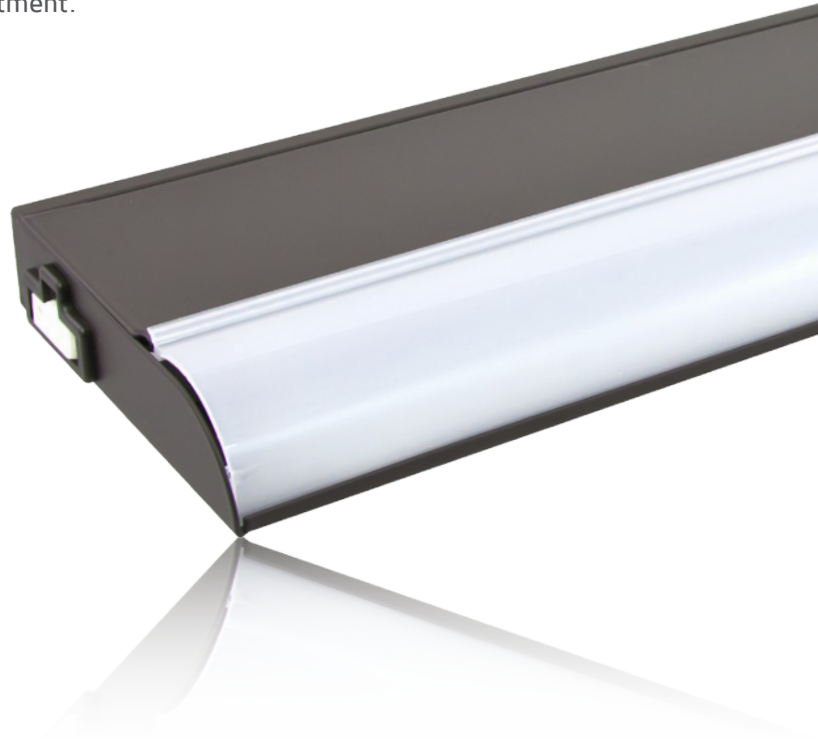
- Dimmable with most incandescent, CFL/LED and low voltage electronic dimmers (check minimum load requirements)
- Cool operation and high light output – LED Contrax fixtures deliver up 850 lumens per fixture
- Low profile housing hides easily – less than 1" high
- 3528 LEDs offer a CRI 82+ and 35,000 hours rated life

## Construction

- Steel housing with powder coat finish is sturdy and durable
- Full length acrylic lens diffuses light evenly over the work area
- Multiple connection points hold PC board firmly against heat sink, optimizing heat dissipation and extending LED life

## Installation

- Mount to underside of shelf or cabinet, at the leading edge, for best performance
- Modular design with hardwire junction boxes, power cords and linking cables sold separately offers maximum flexibility and optimal fixture placement
- Quick access door speeds hardwire installations by eliminating the need to open the wiring compartment



## Specifications

Series	LUC
Input voltage	120V AC, 60Hz
Color temperature	3000K
CRI	82+
Wattage	4W / 6W / 9W / 12W
Lumens	See individual product
Maximum run	50 fixtures
Beam angle	120°
Dimming	Triac and low voltage electronic
Housing	Cold rolled steel
Lens	Acrylic
Rating	c/ETL/us Listed, dry locations
Dimensions	3-5/8"W x 7/8"H x Length
Power input	Hardwire or plug-in
Mounting	Via keyhole slots in housing
Linking	Via jumpers
LED type	2835 SMD LED
Rated life	35,000 hrs

## Building a System

### Determine Layout:

Determine the quantities and lengths of fixtures needed.

Determine power input:

1. Hardwire via knockouts
2. Plug-in

### Select Power Input Accessories:

1. Hardwire via knockouts:  
no additional accessories needed
2. Plug-in: use LUC-PC6, one per fixture or one for first fixture and link subsequent

### Select Linking Accessories:

1. Linking with 3" spacing:  
no additional accessories needed
2. Linking with other spacing:  
Choose 6", 12" or 24" jumpers  
(LUC-EX cables)

## LED Contrax Fixtures



### LED Contrax - Dark Bronze

#### LUC-8-DB

8-1/2" / 4W / 210Lm

#### LUC-16-DB

16-1/2" / 6W / 420Lm

#### LUC-24-DB

24-1/2" / 9W / 650Lm

#### LUC-32-DB

32-1/2" / 12W / 850Lm



### LED Contrax - White

#### LUC-8-WH

8-1/2" / 4W / 210Lm

#### LUC-16-WH

16-1/2" / 6W / 420Lm

#### LUC-24-WH

24-1/2" / 9W / 650Lm

#### LUC-32-WH

32-1/2" / 12W / 850Lm

## LED Contrax Accessories



#### LUC-PC6-WH (White) LUC-PC6-BK (Black)

6ft power cord  
for LED Contrax  
120V AC grounded plug  
and power connector  
c/ETL/us Listed, dry



#### LUC-EX-3-BK 3" LUC-EX-6-BK 6" LUC-EX-12-BK 12" LUC-EX-24-BK 24"

Jumper (linking) cables  
for LED Contrax with male/  
female connectors  
c/ETL/us Listed, dry



#### LUC-EX-3-WH 3" LUC-EX-6-WH 6" LUC-EX-12-WH 12" LUC-EX-24-WH 24"

Jumper (linking) cables  
for LED Contrax with male/  
female connectors  
c/ETL/us Listed, dry